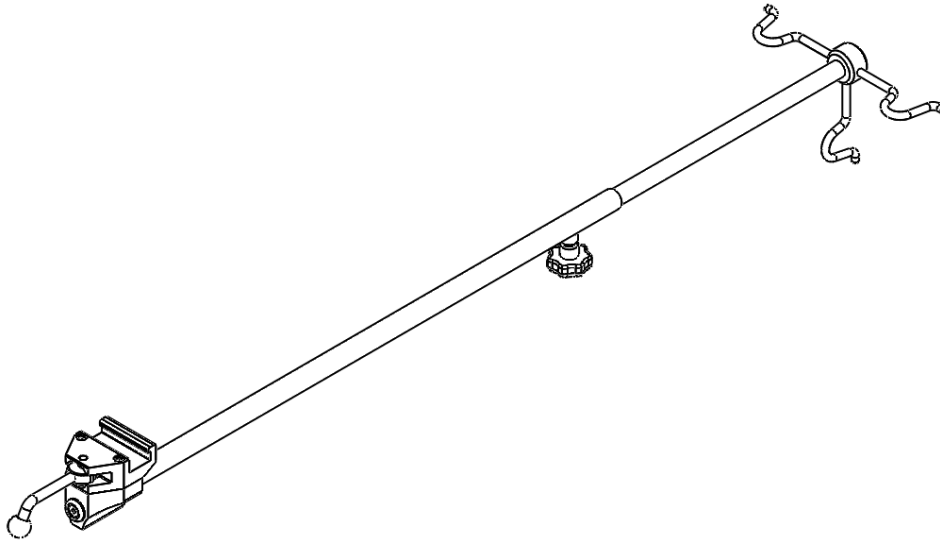


## Infusion stand fixed 10-401 including versions

---



Version	Description
10-401	Clamp (EU 25x10 mm rail)
10-401-US	Clamp (US 1½" x ⅜" rail)
10-401-UK	Clamp (UK 1¼" x ¼" rail)



Warning! This symbol indicates important information related to safety. Follow these instructions carefully.



Read User Manual before use! It is important to fully understand the content of the user manual before attempting to use the equipment.



2021-07-12

Dokument nummer: M10-401EN rev.01

## Intended use

---

Infusion stand for hanging infusion bags and lighter equipment. The product is to be used by medical professionals within a medical facility.



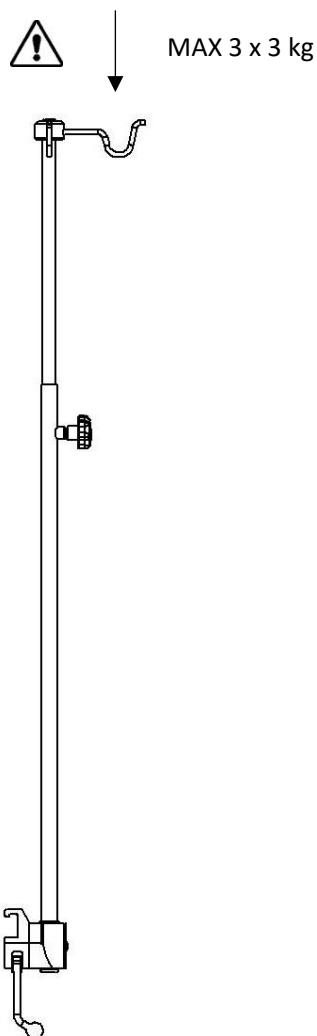
## Safety regulation

---

Maximum load: 9 kg (3 kg per hook)

Before use, ensure correct function!

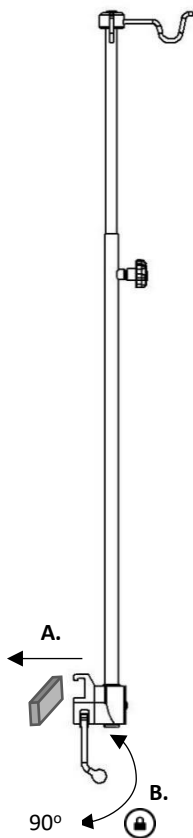
Service and preventive maintenance shall be performed by authorized personnel.



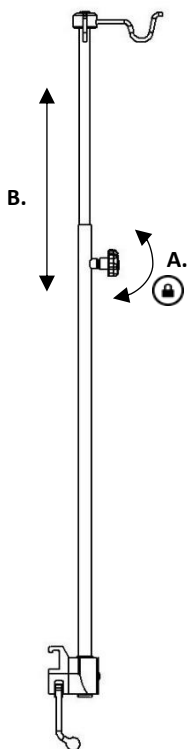
## User instruction

---

### Installation



### Position adjustment



## Maintenance

Service, preventive maintenance, adjustment and repair shall be performed by authorized personnel only. Altering the construction without a written consent from the manufacturer, is strictly forbidden.

## Cleaning

Clean with antiseptic detergent with pH 6 – 8 and warm water. Ethanol can be used. Wipe dry with soft cloth. Do not use strong acidic or alkaline detergent.

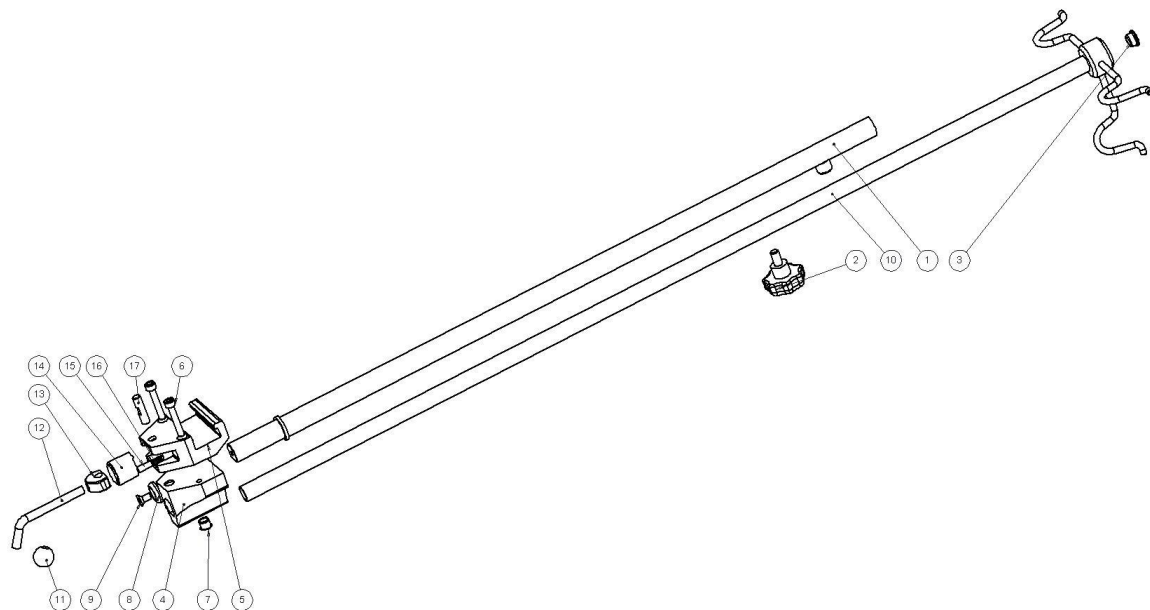
## Control

Check that there are no loose parts and that there is no damage to any part. Check the locking function on the clamps.

## Annual service

Once a year the Infusion stand shall be carefully cleaned, moving parts shall be lubricated, the locking function shall be tested.

## Spare parts



	Description	Version:			
		10-401	10-401-US	10-401-UK	
Pcs.		Article no.	Article no.	Article no.	
1.	Post	1	10672	10672	10672
2.	Knob VCT 43p-M8x16	1	-	-	-
3.	Plastic plug IKP1612-13K	1	-	-	-
4.	Guide	1	10053	10053	10053
5.	Clamp body	1	10031	10547	10543
6.	Screw MC6S M6x35 FZ	2	-	-	-
7.	Plastic plug IKPT 10/12x10	1	-	-	-
8.	Washer	1	10004	10004	10004
9.	Screw MF6S M6x12 A2	1	-	-	-
10.	Pole	1	10206	10206	10206
11.	Ball	1	K20M8S	K20M8S	K20M8S
12.	Lock lever	1	10014	10014	10014
13.	Eccentric	1	11165	11165	11165
14.	Plunger	1	10711	10711	10711
15.	Pressure pin	1	10012	10012	10012
16.	Spring	1	10013	10013	10013
17.	Shaft	1	10009	10009	10009

## Technical specification

Maximum load	9 kg (3 kg per hook)	
Dimension (H x W x L)	1050-1550 x 240 x 75 mm	
Weight	1,9 kg	
Material Infusion stand	Stainless steel Aluminum	
UDI-DI	10-401	07350111831042
	10-401-US	07350111831066
	10-401-UK	07350111831059



Reison Medical AB  
Eriksbergsvägen 32A  
734 92 Hallstahammar  
SWEDEN

+46 (0)220 433 99 | [order@reison.se](mailto:order@reison.se) | [info@reison.se](mailto:info@reison.se)