

Warning! This symbol indicates important information related to safety. Follow these instructions carefully.



Read User Manual before use! It is important to fully understand the content of the user manual before attempting to use the equipment.

CE

2022-02-11

Document number: M10-316EN rev.01

Intended use

Robot shield intended to be used as a protective barrier for the patient to prevent collision during robotic surgery. The product is to be used by medical professionals within a medical facility.



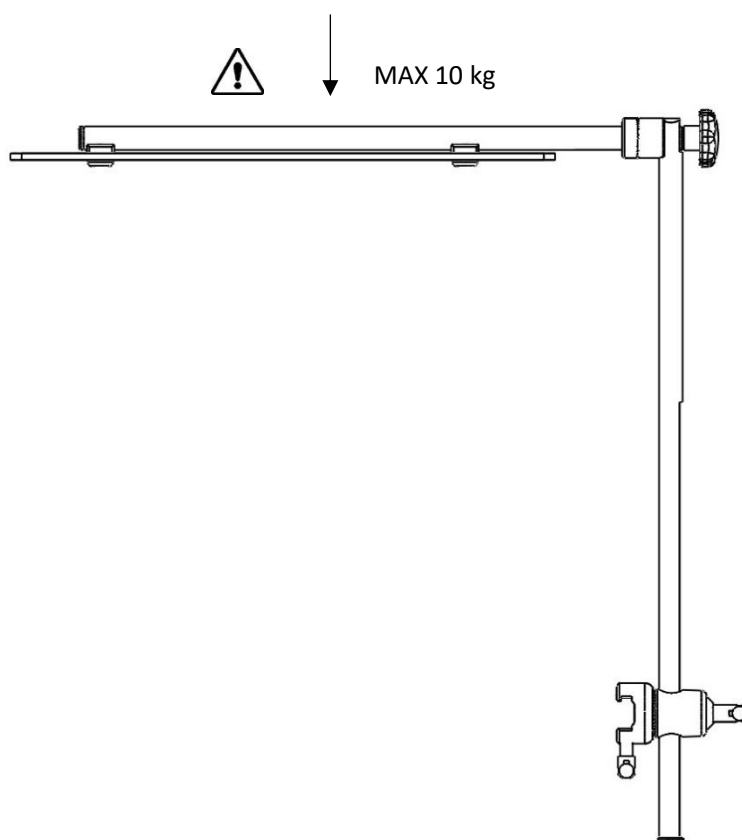
Safety regulation

Maximum load: 10 kg in even distribution.

Before use, ensure correct function!

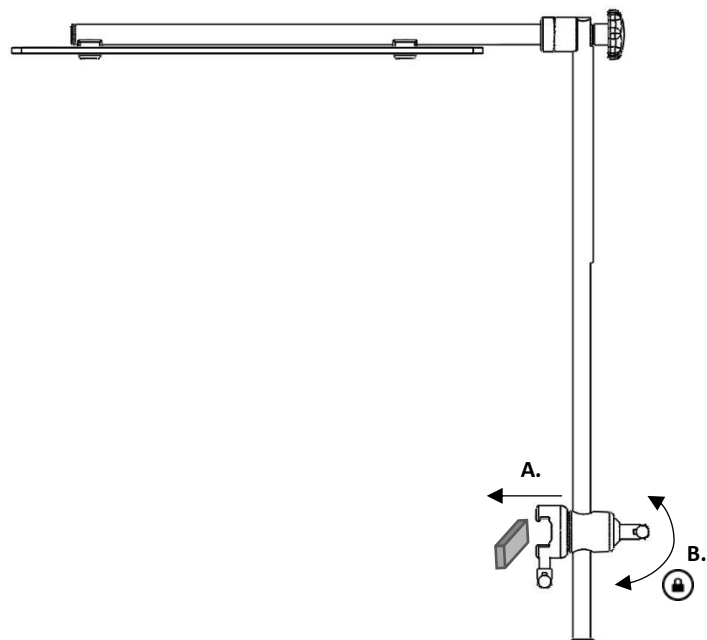
When loosening the lock lever to adjust the positioning, support underneath, to prevent the Robot shield from uncontrolled descend into the bottom position.

Service and preventive maintenance shall be performed by authorized personnel.

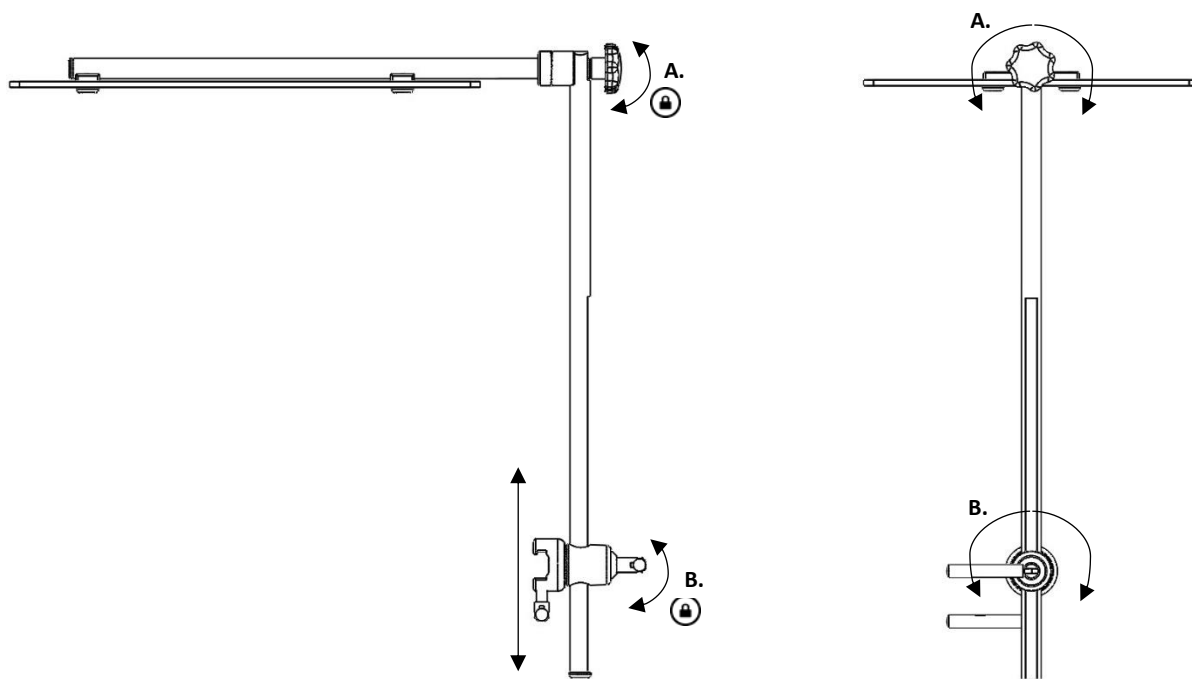


User instruction

Installation



Position adjustment



Maintenance

Service, preventive maintenance, adjustment and repair shall be performed by authorized personnel only. Altering the construction without a written consent from the manufacturer, is strictly forbidden.

Cleaning

Clean with antiseptic detergent with pH 6 – 8 and warm water. Ethanol can be used. Wipe dry with soft cloth. Do not use strong acidic or alkaline detergent.

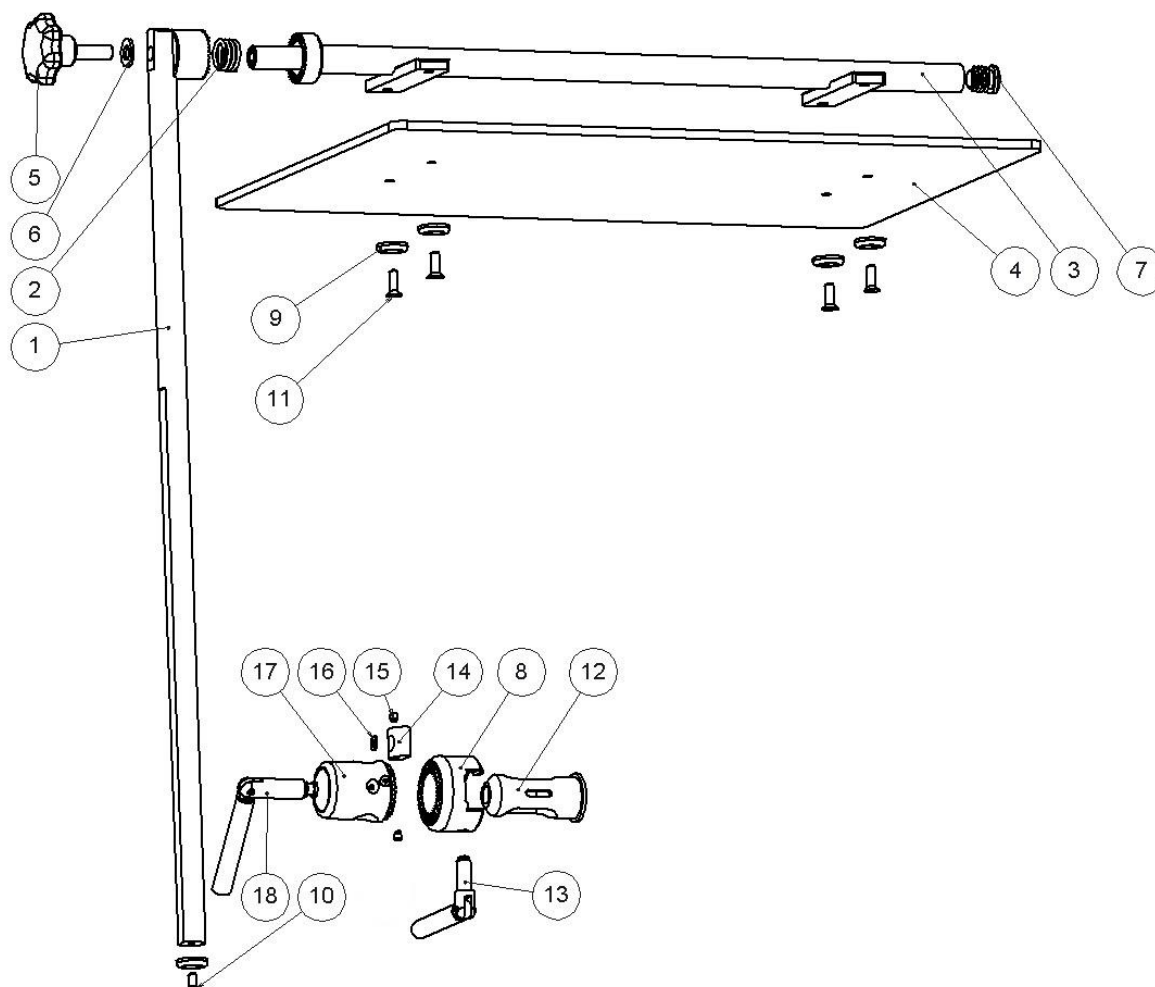
Control

Check that there are no loose parts and that there is no damage to any part. Check the locking functions and the functionality of the clamp.

Annual service

Once a year the Robot shield shall be carefully cleaned, moving parts shall be lubricated, the locking function shall be tested.

Spare parts



	Description	Pcs.	Article no.
1.	Post	1	12097
2.	Spring	1	1602
3.	Plate fitting	1	12101
4.	Plate	1	12102
5.	Knob VCT.53B M10x30	1	-
6.	Washer BRB 10,5x20x2 nylon	1	-
7.	Plastic plug IKP 2015S	1	-
8.	Gear ring	1	10315
9.	Washer	5	10004
10.	Screw MF6S M6x12 A2	1	-
11.	Screw MF6S M6x18 A2	4	-
12.	Guide	1	10320
13.	Lock handle	1	10062
14.	Stud	1	10429
15.	Set screw MT6SS M5x6 A2	2	-
16.	Washer DB 5x10x0,5	1	-
17.	Gear cylinder	1	10316
18.	Lock handle	1	10346

Technical specification

Maximum load	10 kg in even distribution
Dimension (H x W x L)	650 x 350 x 665 mm
Weight	4,8 kg
Material Robot shield	Stainless steel PC
UDI-DI	07350111832476



Reison Medical AB

Eriksbergsvägen 32A

734 92 Hallstahammar

SWEDEN

+46 (0)220 433 99 | order@reison.se | info@reison.se