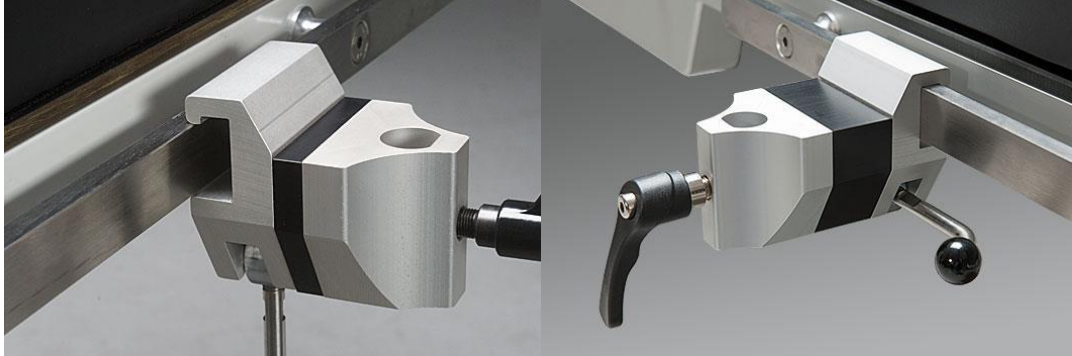


TECHNICAL DATA SHEET

Clamp armboard 10019



Intended use

Clamp intended to attach and position accessories, with a pole size \varnothing 16 mm or plane \varnothing 20 mm, to the accessory rail on operating and examination tables. The product is to be used by medical professionals within a medical facility.

Technical Specifications	
Maximum workload	10 kg inward load over the OR-table and 20 kg outward load away from the OR-table, according to EN 60601-1 and EN 60601-2.
Weight	0,65 kg
Material clamp	Aluminium

Version	UDI-DI	Dimension (H x W x L)
10019	07350111830281	155 x 65 x 145
10019-S30	07350111830298	155 x 65 x 165
10019-UK	07350111830304	155 x 65 x 145
10019-US	07350111830311	155 x 65 x 145



2021-04-14

Document number: M10019EN rev.01