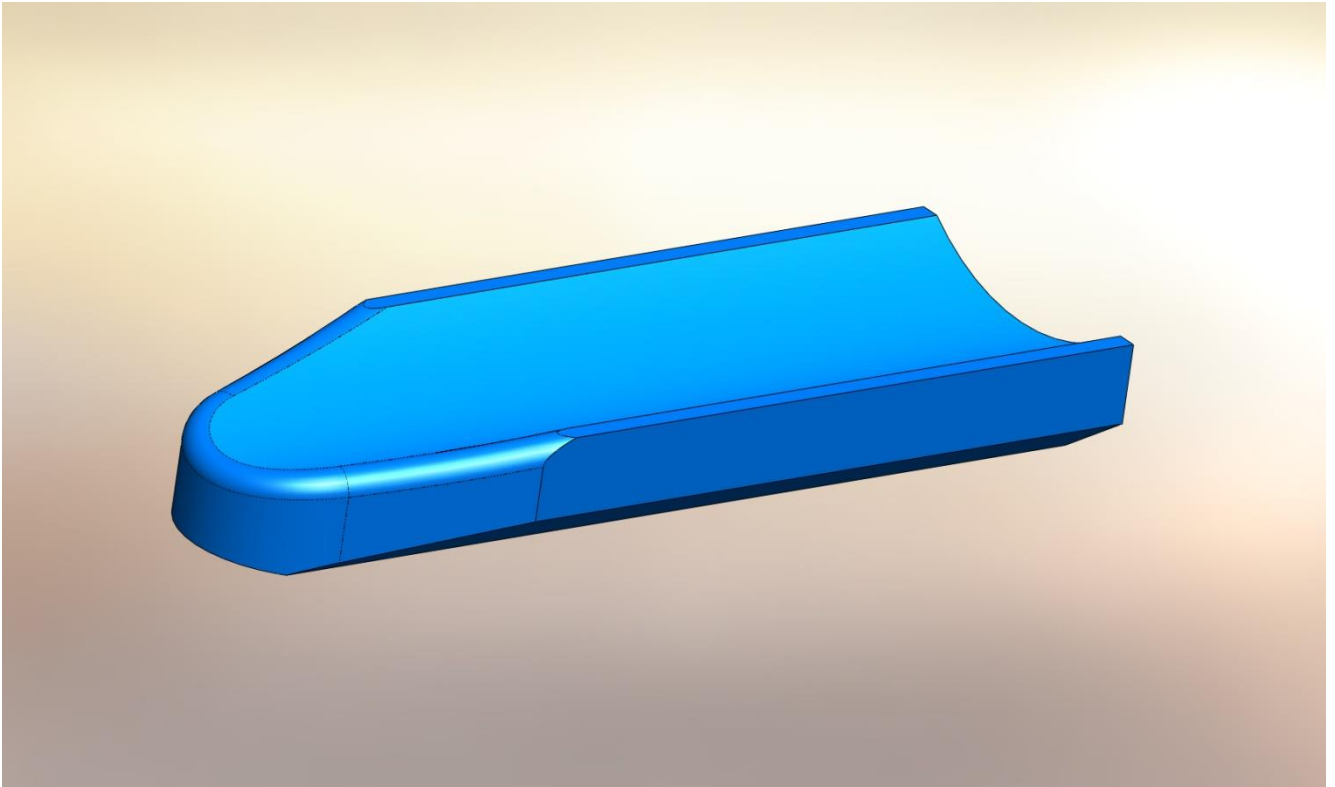


USERS MANUAL

ARMBOARD MATTRESS

10-382-K



CE

PID 80226

GMDN 41571

REISON
MEDICAL

INTRODUCTION

This mattress is made for arm boards with flat surface and bent up edges. It consists of soft temper foam and is covered with non flammable blue fabric. On the under side there is a Velcro strap for fixation to the arm board plate.

ABOUT USERS MANUAL

This manual is for clinical personnel, service personnel and others who need the knowledge about and understanding of how the mattress should be handled.

- Read the manual carefully before using the equipment.
- Always follow the instructions in the manual.
- Always keep the manual close to the equipment.

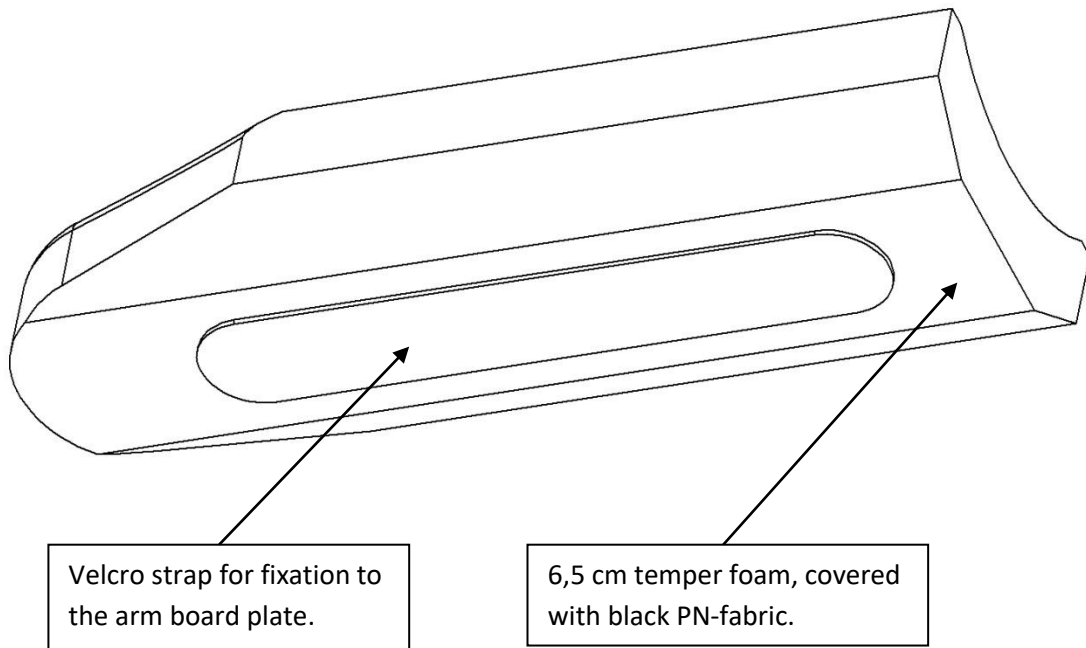
IMPORTANT SECURITY INSTRUCTIONS

To be sure of there is no damage on the mattress, a check shall be done before every time of use.

INSTALLATION

At the unpacking, check for any kind of damage to the equipment. Check against the delivery note, that the correct parts are delivered.

GENERAL DESCRIPTION



MAINTENANCE AND CARE

Cleaning

Wash with antiseptic soap detergent with PH 6-8 and warm water. Do not use alcohol or detergents containing strong acids or bases. Dry with soft cloth.

Control

Check every day for any kind of damage. Damaged parts shall be replaced immediately to avoid blood and other human fluids from leaking into the foam.

TECHNICAL SPECIFICATION

Length	45 cm
Width	16 cm
Thickness	6,5 cm
Weight	0,2 kg



Box 240 Eriksbergsvägen 32A
734 25 Hallstahammar
Sweden

Phone: +46 220 43399 Fax: +46 220 29016

E-mail: info@reison.se

www.reison.se